

ttmt.com.mx



20
22



TROOM

Testing, Training & Therapy





WHAT IS THE TROOM?

*It is a space for evaluation,
training and therapy.*

The TROOM (Training Testing and Therapy Room) works as an evaluation room with training and therapy functions. It is made up of various devices able to stimulate the senses and measure different variables of human performance. All devices can connect and interact with each other and with the patient or user.

This system contains different sensors that automatically measure balance, range of motion, fine coordination, gross coordination, reaction time, endurance, speed, assertiveness, understanding, among other things. It also provides biofeedback. All this makes for the sessions in the TROOM to be a motivating, extraordinarily immersive, and interactive experience.



In the TROOM, we can create immersive environments with images, videos, colors, onomatopoeia, voice, music, scents, textures, thermal sensations, and vibrations in order to stimulate, induce and motivate the patient or user to carry out their activities.

TROOM is an interactive system made up of electronic and physical devices capable of stimulating the senses and measuring time and body movements, all of this through face and voice command recognition tools, intelligent management, virtual reality, and feedback, which mainly enhances the following areas:

- ▶ Medical treatment
- ▶ Sports training
- ▶ Physical performance evaluation
- ▶ Learning processes

HOW DOES THE **TROOM** WORK?

The TROOM has application protocols for specific purposes. These modules consist of sessions designed by specialists in each area and are based on long-used and proven methodologies and techniques.



When performing the stimuli in the sessions, their duration, intensity, and sequence are controlled by the TROOM. This way, the reproducibility and the objective of each session do not rely on the operator's criteria but are standardized by the system itself. Thus, certainty in the application of the methodology is achieved, enhancing the results.

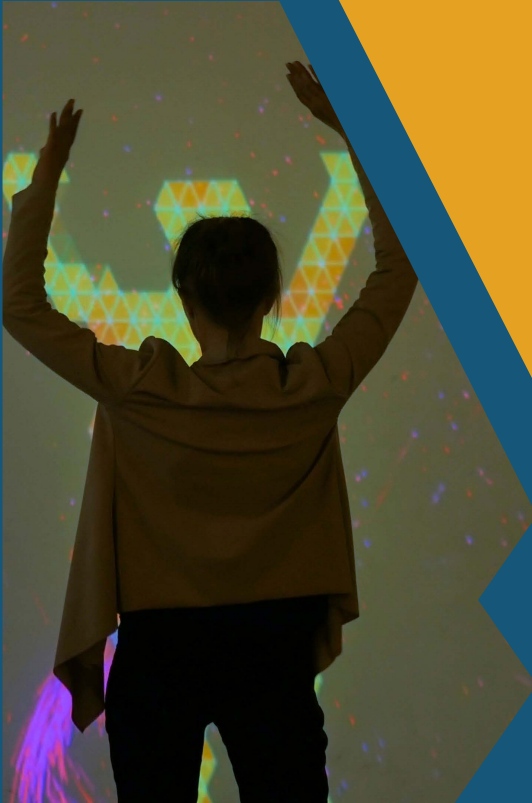


WHAT ARE THE TROOM'S BENEFITS?



With the TROOM's protocols, which are based on best practices and proven methodologies through research and the experience of specialists in each area of study and application, we achieve the following:

- ▶ Process standardization
- ▶ Measurable, comparable results and objectives
- ▶ Reproducibility
- ▶ Patient registration and results follow-up
- ▶ Treatment flexibility
- ▶ Versatility and individual and group use, customization



The applications of the TROOM can be very diverse. At the moment, the following modules are available:

ATTENTION MODULES



- ▶ Neurodevelopment
- ▶ Visual deficiency
- ▶ Autism
- ▶ Language disorders
- ▶ Special education
- ▶ Elderly
- ▶ Sports training and evaluation
- ▶ Physical performance evaluation



WHAT DIFFERENTIATES IT FROM OTHER PROPOSALS ON THE MARKET?

- Reactive elements to the user interaction and with each other
- Immersive environments
- Patient enrollment system
- Data management system
- Exportable data for analysis and research
- Tailor-made projects according to the needs of each client
- Care protocols based on best practices and research from specialists in each area
- An immersive and digital audio playback system
- User certification that guarantees the proper use of the TROOM therapeutic tools
- Single command system
- Manual mode
- It adapts to any space and budget

- Integration of medical, sports, and educational protocols.
- Cloud update
- IOS -Android systems
- Global application technology
- Integration of all devices into one system
- Face ID
- Voice prompts
- Use of augmented reality
- Immersive audio system
- Settable and modular design, according to use, for clinics, gyms, sports centers, schools, etc.
- Client training and certification in clinical protocols



ttmt.com.mx



TROOM

Testing, Training & Therapy



20
22

The versatility and flexibility of the **TROOM** system adapt to any space. Its applications are limited only by the user's imagination and creativity.